

Component Replacement - electrical -



Xperia C5 Ultra
E5506, E5533, E5553, E5563

CONTENTS

1	Replaceable Components	3
2	Component Placing.....	5
3	Additional Repair info	7
4	Revision History	15

For general information about electrical repair related issues, refer to 1220-1336: Generic Repair Manual - electrical

Baking prior to repair is required, if the board have been exposed to air more than 12 hours from PWB package opening. Too long exposure time increase the level of moisture in PWB and the PWB could delaminate during repair process and result in direct or latent failures and reduce reliability.

The boards shall be baked in 125°C ±5°C for 4 hours.

Test after electrical replacement: refer to 1273-1772 Mechanical Test Instruction

All Electrical components are RLC level B, Reversed Logistic Classification, See the Spare Part Handling chapter in Mechanical/Generic Repair Manual 1220-1333.

Do not remove shield can lids (Heat pasta are added and RF performance will be damaged)

1 Replaceable Components

EXPLANATION OF ABBREVIATIONS USED IN THE COLUMN 'COMMENTS' BELOW

COMPONENT LOCATION

P = Primary side

S = Secondary side

REPAIR METHOD

HA = Hot Air (removal & mounting)

ST = Soldering Tool (removal & mounting)

HA/ST = Hot Air for removal - Soldering Tool for mounting

BGA = BGA Station

BH = Bottom Heater

ADDITIONAL INFORMATION

⇒1 (2,3,4, etc.) = Proceed to 'Additional Repair Info' for further instructions in the indicated section(s).

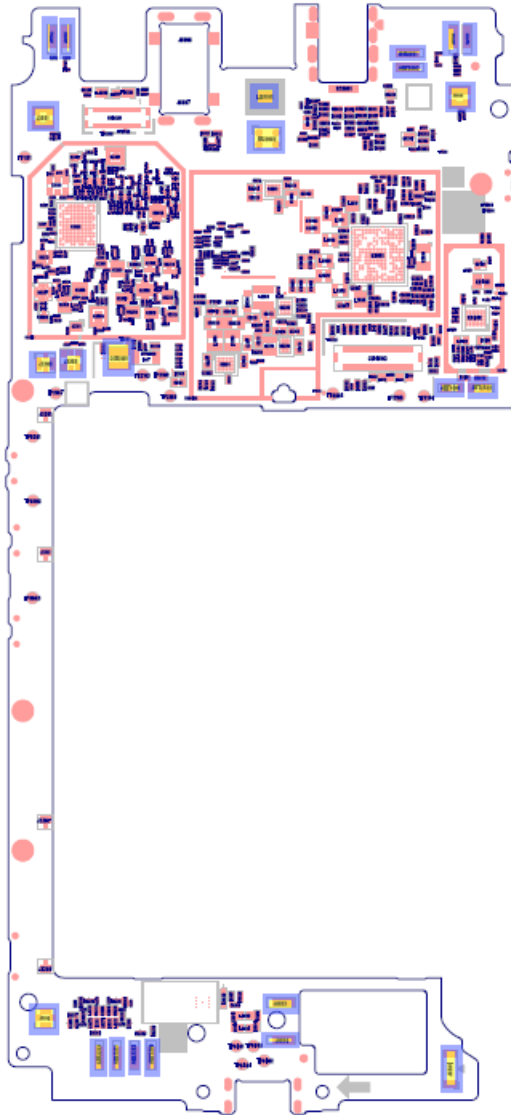
Position	Component	Part no.	Comments
ANT2401	Spring Connector	A/314-0000-00550	S HA+BH ⇨1
ANT2402	Spring Connector	A/314-0000-00550	S HA+BH ⇨1
ANT3301	Spring Connector	A/314-0000-00937	S HA+BH ⇨2
ANT3302	Spring Connector	A/314-0000-00937	S HA+BH ⇨2
ANT3303	Spring Connector	A/314-0000-00937	S HA+BH ⇨2
ANT3304	Spring Connector	A/314-0000-00937	S HA+BH ⇨2
ANT3403	Spring Connector	A/314-0000-00937	S HA+BH ⇨3
ANT3405	Spring Connector	A/314-0000-00937	S HA+BH ⇨3
ANT5001	Spring Connector	A/314-0000-00937	S HA+BH ⇨4
ANT5002	Spring Connector	A/314-0000-00937	S HA+BH ⇨5
ANT5003	Spring Connector	A/314-0000-00937	S HA+BH ⇨4
ANT5004	Spring Connector	A/314-0000-00937	S HA+BH ⇨5
CON2101	BATTERY Connector	A/314-0000-00884	S HA+BH ⇨6
J3302	Connector Coax Receptacle 1p test switch	A/314-0000-00282	S HA+BH ⇨7
J3304	RF CONNECTOR WITH SWITCH_4 pin	A/314-0000-00825	S HA+BH ⇨8
J3305	RF CONNECTOR WITH SWITCH_4 pin	A/314-0000-00825	S HA+BH ⇨9
J3401	Connector Coax Receptacle 1p test switch	A/314-0000-00282	S HA+BH ⇨10
J4001	MICRO SD CONNECTOR	A/314-0000-00930	P HA+BH or BGA ⇨11
J5002	Connector Coax Receptacle 1p test switch	A/314-0000-00282	S HA+BH ⇨12
J6002	EAR PHONE JACK CONNECTOR	A/314-0000-00966	P HA+BH ⇨13
J6003	Spring Connector	A/314-0000-00937	S HA+BH ⇨14
J6004	Spring Connector	A/314-0000-00937	S HA+BH ⇨14
J6401	MICRO USB CONNECTOR	A/314-0000-00944	P HA+BH ⇨15
J6402	Connector Leaf Spring Plug 1p Antenna	A/314-0000-00659	P HA+BH ⇨16
J6403	Connector Leaf Spring Plug 1p Antenna	A/314-0000-00659	P HA+BH ⇨16
J6404	Connector Leaf Spring Plug 1p Antenna	A/314-0000-00659	P HA+BH ⇨16
J6405	Connector Leaf Spring Plug 1p Antenna	A/314-0000-00659	P HA+BH ⇨17
J6406	Connector Leaf Spring Plug 1p Antenna	A/314-0000-00659	P HA+BH ⇨17
J6407	Connector Leaf Spring Plug 1p Antenna	A/314-0000-00659	P HA+BH ⇨18
J6408	Connector Leaf Spring Plug 1p Antenna	A/314-0000-00659	P HA+BH ⇨18
J6409	Connector Leaf Spring Plug 1p Antenna	A/314-0000-00659	P HA+BH ⇨18
J6501 E5506 and E5553	NANO SIM CARD CONNECTOR SINGLE	A/314-0000-00941	P HA+BH or BGA ⇨19
J6501 E5533 and E5563	NANO SIM CARD CONNECTOR	A/314-0000-00942	P HA+BH or BGA ⇨19
J6504	WIRE TO BOARD CONNECTOR	A/314-0000-00927	S HA+BH ⇨20
LED2302	LED Flash	A/309-0000-00276	S HA+BH ⇨21
LED2304	LED Flash	A/309-0000-00276	P HA+BH ⇨22
MIC6002	Microphone	A/312-0000-00046	S HA+BH ⇨23
MIC6003	Microphone	A/312-0000-00046	P HA+BH ⇨24
SW6501	switch	A/315-0000-00085	P HA+BH ⇨25
SW6502	Input switch	A/315-0000-00086	P HA+BH ⇨26
SW6503	Input switch	A/315-0000-00086	P HA+BH ⇨27
SW6504	Input switch	A/315-0000-00086	P HA+BH ⇨28
SW6505	Switch	A/315-0000-00080	P HA+BH ⇨29

2 Component Plcing

To access the Component Placing document, double-click the icon below.
Applicable for on-screen viewing only – icon not shown on hard-copies.



Primary side



Secondary side

3 Additional Repair info

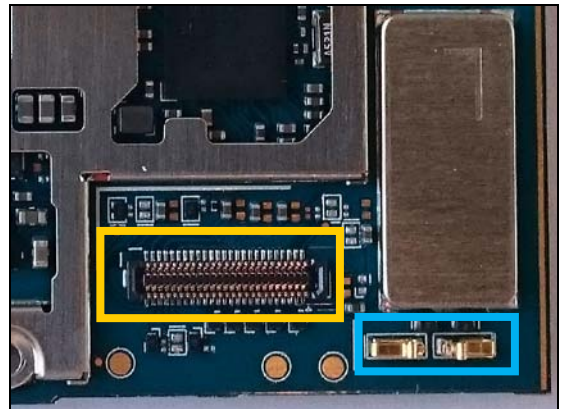
1

ANT2401, ANT2402

Replace if mechanical damaged.

(No or bad NFC)

Protect the BtB connector with capton tape!

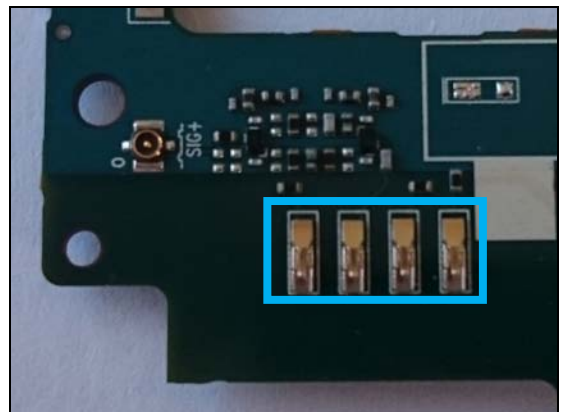


2

ANT3301, ANT3302, ANT3303, ANT3304

Replace if mechanical damaged.

(Bad network, Main antenna)

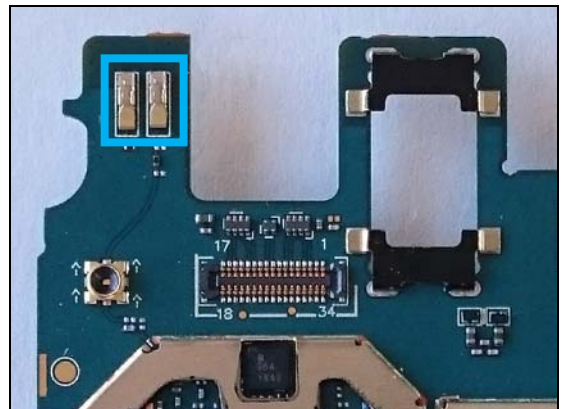


3

ANT3403, ANT3405

Replace if mechanical damaged.

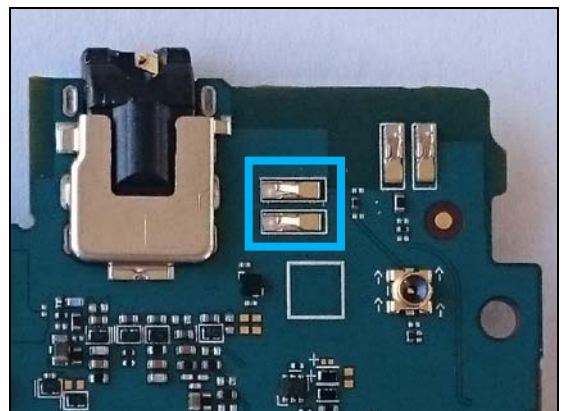
(Bad network, diversity Rx antenna)



4

ANT5001, ANT5003

Replace if mechanical damaged (No or bad WLAN/ BT)

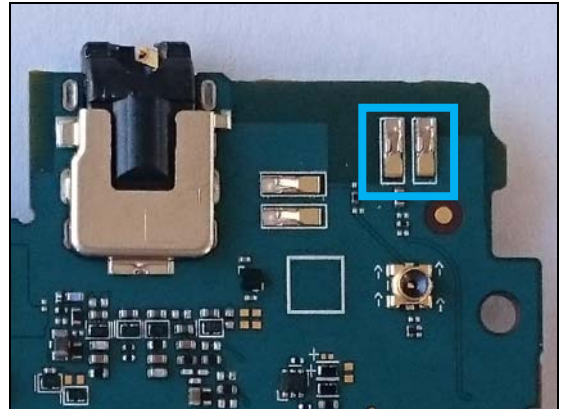


Repair Actions: Additional Repair Info

5

ANT5002, ANT5004

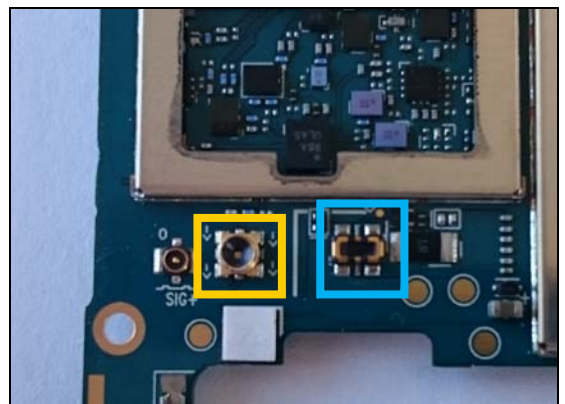
**Replace if mechanical damaged
(No or bad GPS)**



6

CON2101

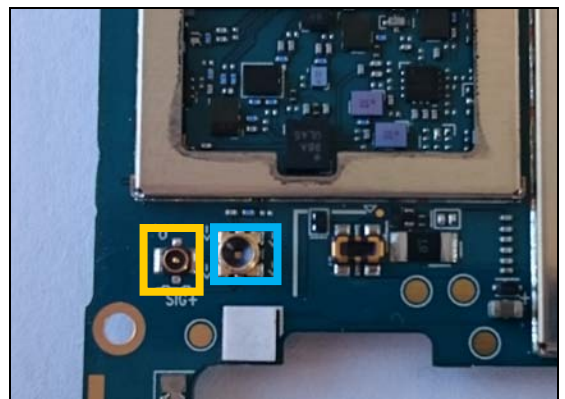
**Replace if mechanical damaged (Phone dead or power off)
Protect the RF connector with capton tape!**



7

J3302

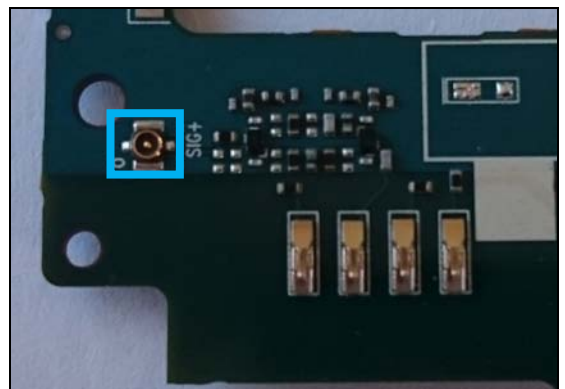
**Replace if open circuit 1-2
(Bad network, Main antenna)
Protect the RF connector with capton tape!**



8

J3304

**Replace if mechanical damaged.
(Bad network, Main antenna)**

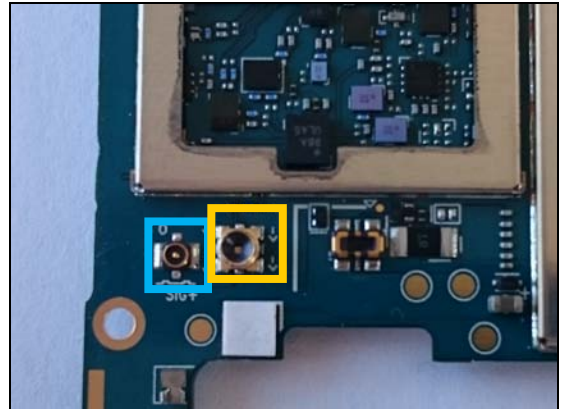


Repair Actions: Additional Repair Info

9

J3305

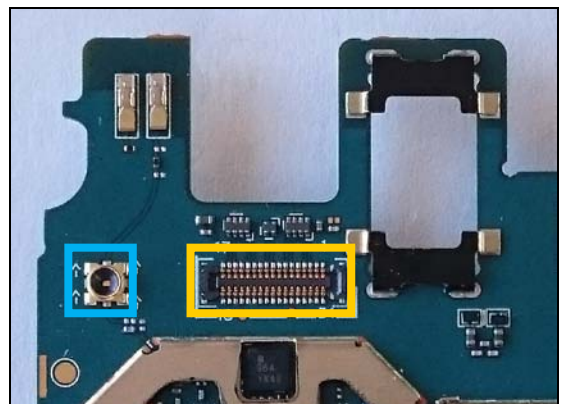
Replace if mechanical damaged.
(Bad network, Main antenna)
Protect the RF connector with capton tape!



10

J3401

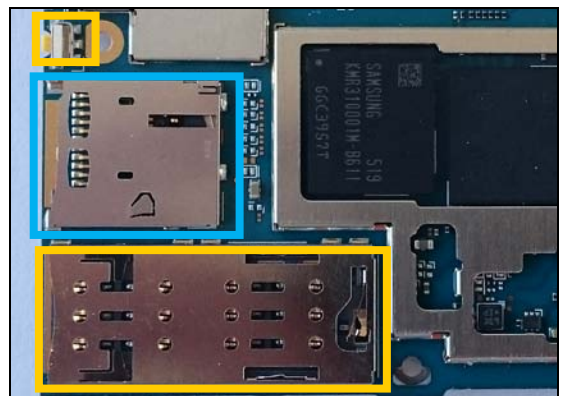
Replace if open circuit 1-2.
(Bad network, diversity Rx antenna)
Protect the BtB and SIM connectors with capton tape!



11

J4001

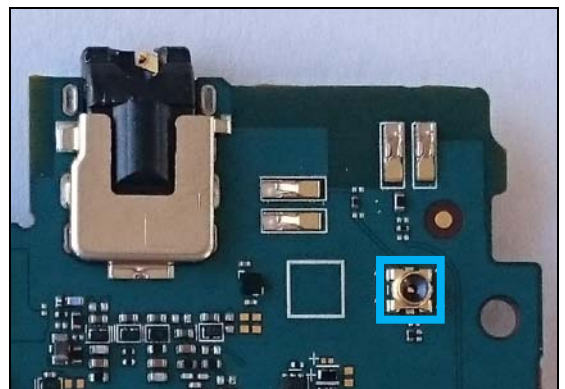
Replace if mechanical damaged.
(No SD card inserted)
Protect the reset switch and SIM connector with capton tape!



12

J5002

Replace if open circuit 1-2.
(No or bad WLAN/ BT)

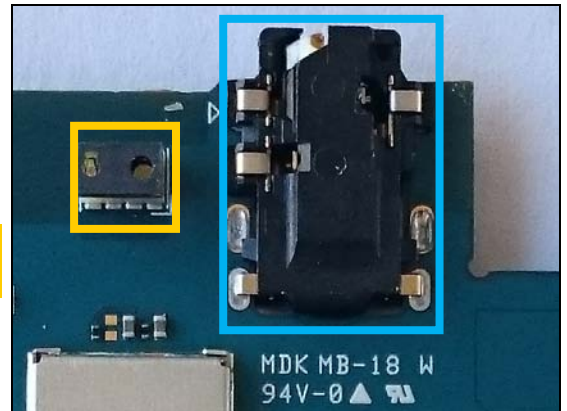


Repair Actions: Additional Repair Info

13

J6002

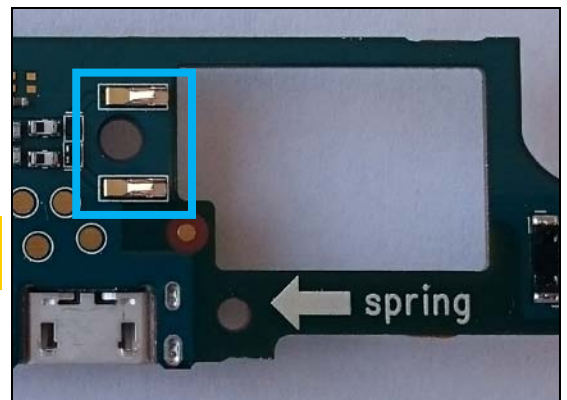
**Replace if no or bad audio to or from headset.
Protect the sensor with capton tape!**



14

J6003, J6004

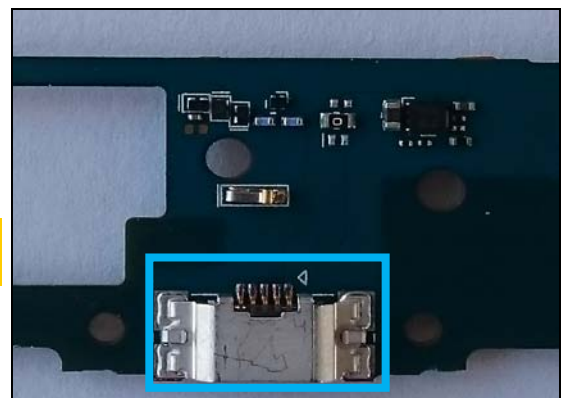
**Replace if mechanical damaged.
(No audio from Speaker)**



15

J6401

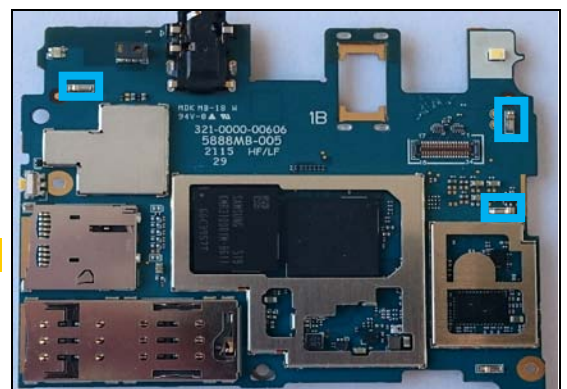
**Replace if mechanical damaged (USB charger or data
transfer not working)**



16

J6402, J6403, J6404

Replace if mechanical damaged.(GND contacts)

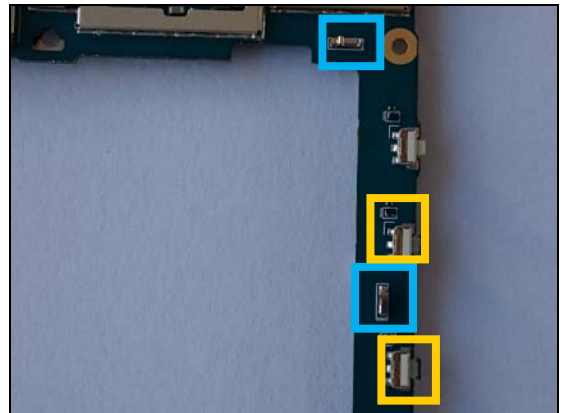


Repair Actions: Additional Repair Info

17

J6405, J6406

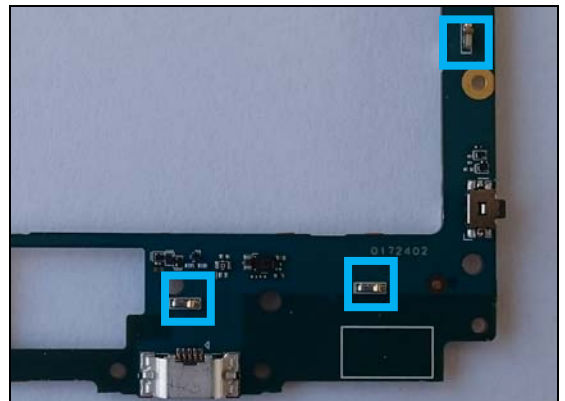
*Replace if mechanical damaged.(GND contacts)
Protect Switches with capton tape!*



18

J6407, J6408, J6409

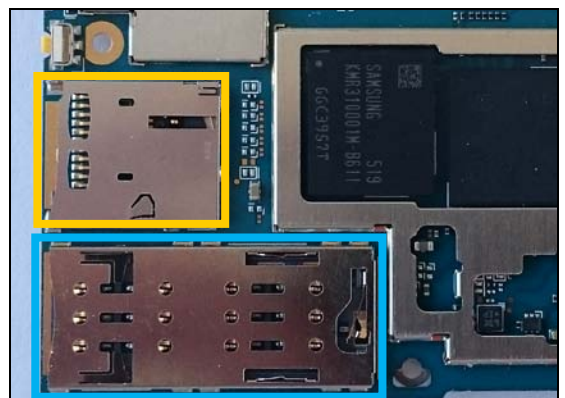
Replace if mechanical damaged.(GND contacts)



19

J6501

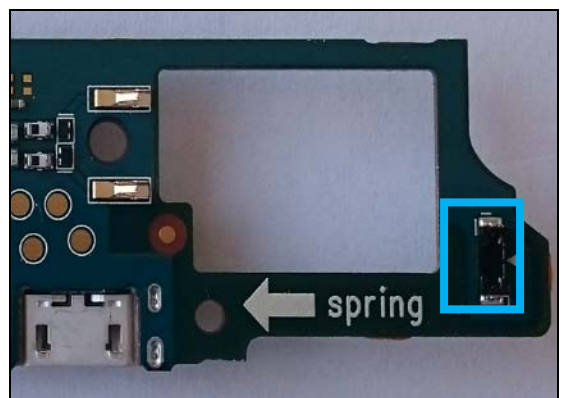
*Replace if mechanical damaged.
(No SIM 1 or SIM 2 card inserted)
Protect the SD connector with capton tape!*



20

J6504

Replace if mechanical damaged (Vibrator not working)

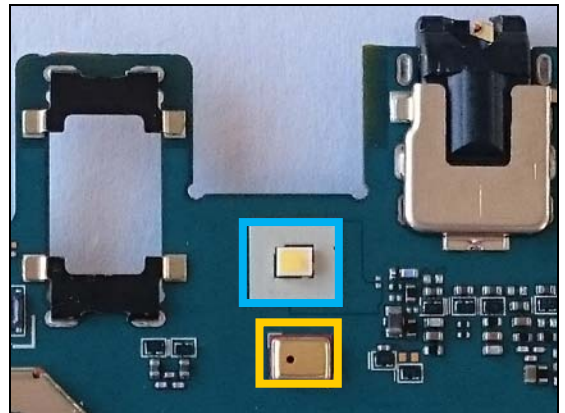


Repair Actions: Additional Repair Info

21

LED2302

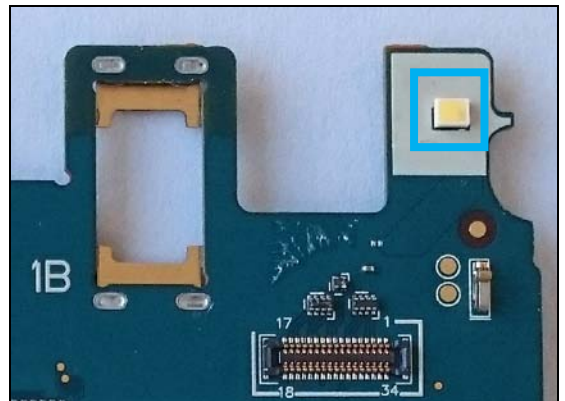
*Replace if Rear Flash LED not working.
Protect the Mic with capton tape!*



22

LED2303

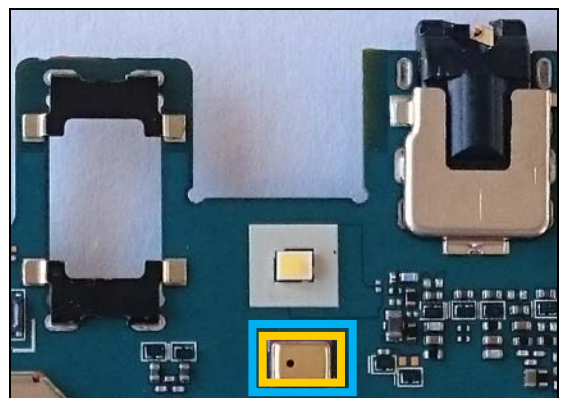
Replace if Front Flash LED not working.



23

MIC6002

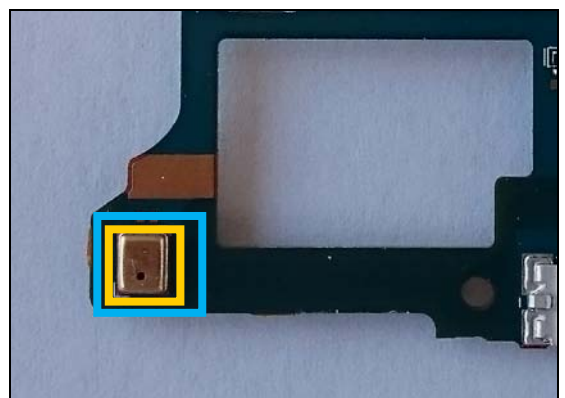
*Replace if no audio from secondary microphone.
When replacing protect secondary microphone with
capton tape!*



24

MIC6003

*Replace if no audio from main microphone.
When replacing protect secondary microphone with
capton tape!*



Repair Actions: Additional Repair Info

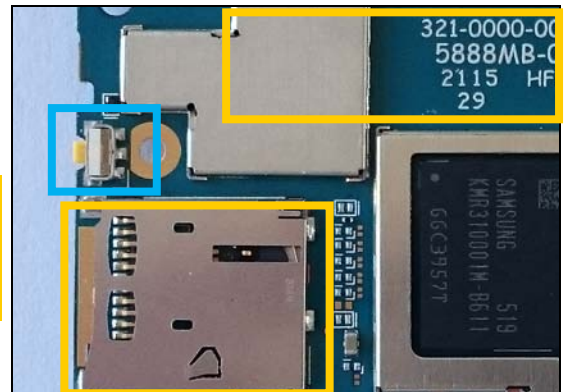
25

SW6501

Replace if mechanical damaged or open circuit 1-2 when pushed.

(Reset not working)

Protect the SD connector with capton tape!



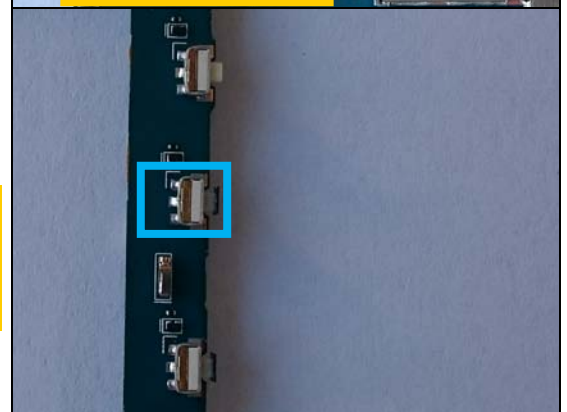
26

SW6502

Replace if mechanical damaged or open circuit 1-2 when pushed.

(Volume up problems)

Protect the reset switch with capton tape!

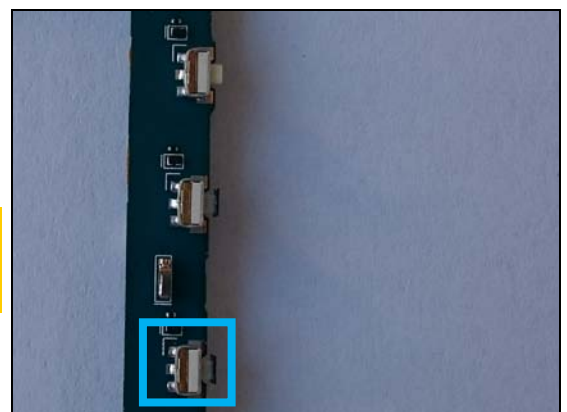


27

SW6503

Replace if mechanical damaged or open circuit 1-2 when pushed.

(Volume down problems)

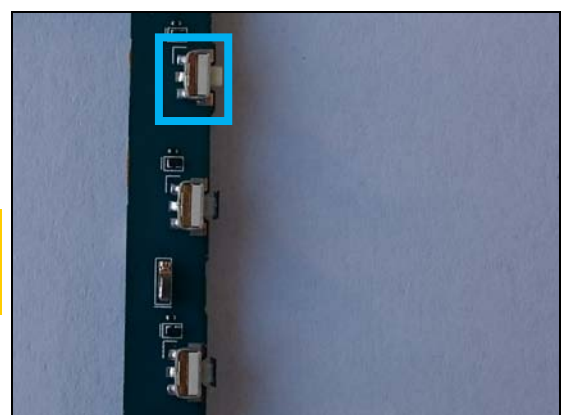


28

SW6504

Replace if mechanical damaged or open circuit 1-2 when pushed.

(Power on problems)

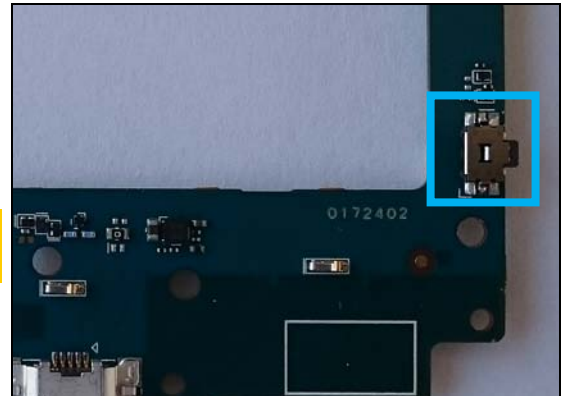


Repair Actions: Additional Repair Info

29

SW6505

***Replace if mechanical damaged.
(Camera not working)***



4 Revision History

Rev.	Date	Changes / Comments
1	2015-08-04	Initial release
2	2015-08-21	Additional Repair info added.